



## Hytera Professional Unified Communication Gateway

- Inter-system voice communication
- Wired and Wireless Connection
- Versatile Interface



Hytera retains right to change the product design and specification. Should any printing mistake occur, Hytera doesn't bear relevant responsibility. Little difference between real product and product indicated by printing materials will occur by printing reason.

HYT, Hytera are registered trademarks of Hytera Communications Co.,Ltd.  
© 2017 Hytera Communications Co.,Ltd. All Rights Reserved.

### Hytera Communications Corporation Limited

Address: Hytera Tower, Hi-Tech Industrial Park North, Beihuan Rd.,  
Nanshan District, Shenzhen, China

Tel: +86-755-2697 2999 Fax: +86-755-8613 7139 Post: 518057

Http: //www.hytera.com Stock Code: 002583.SZ

Connect different facilities,  
networks and technology.

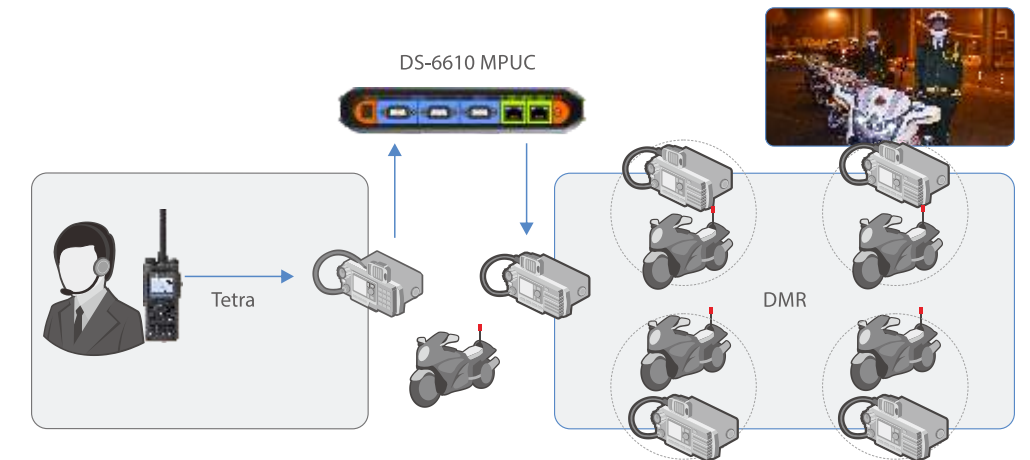


## Applications

### Wireless inter-connection application

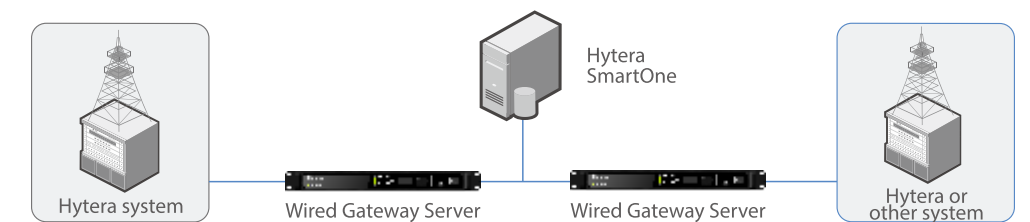
This solution uses a gateway to connect different network's mobile radios to make inter-system communications.

**Typical case:** There are two departments, one has a DMR network, and the other a Tetra network. In certain circumstances the two departments need to communicate and the command centre needs to dispatch both. Hytera SmartOne solution enables the installation of two mobile radios and one gateway in the emergency vehicle to help users communicate between systems.

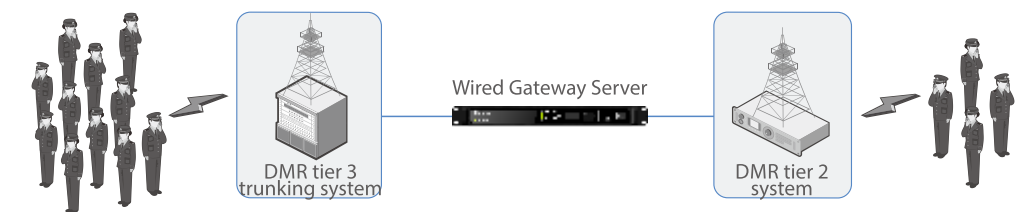


### Wired inter-connection application

This solution uses a PMR manufacturer's system CSSI (Console Subsystem Interface) or ISSI (Inter Subsystem Interface) interface to connect to the Hytera SmartOne system, to achieve inter-system communication.



**Typical case:** The Urban area adopts a DMR Trunking system, while the suburbs adopt DMR Tier 2. Via Hytera SmartOne, the two systems can be connected seamlessly; terminals can roam between these two systems and be contacted via a common dispatcher.



### Features for Hytera DMR Tier 2 and Tier 3 Interconnection

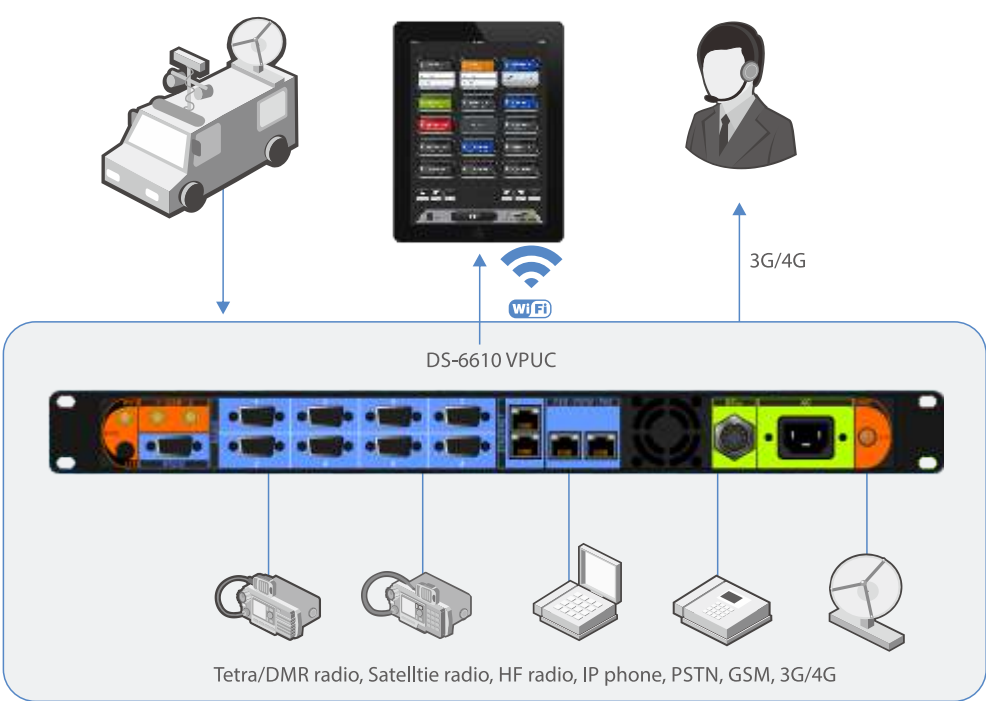
- One number for one terminal in both networks
- Roaming in conventional and trunking networks
- Individual call and message, group call and message
- Inter-system E2EE
- No need to re-codec for inter-system call



Mobile Inter-connection

Hytera DS-6610 VPUC supports car-mounted installations, which makes mobile inter-connection and dispatching possible.

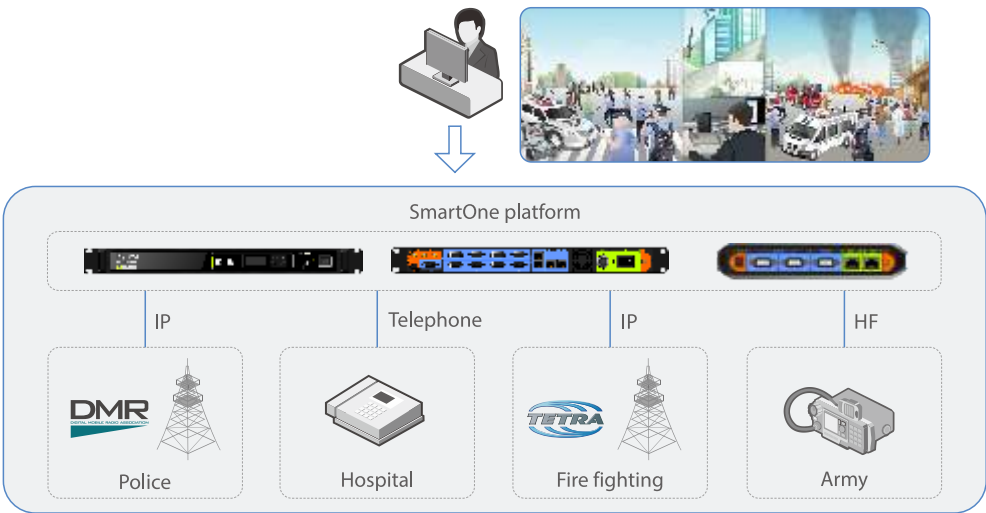
**Typical Case:** DS-6610 VPUC is intended as a fast deployment on-site command center which achieves intercommunication among different devices. With multiple interfaces and powerful processing services, the DS-6610 VPUC can achieve inter-department cooperation and enable real-time communication between the onsite command center and headquarters.



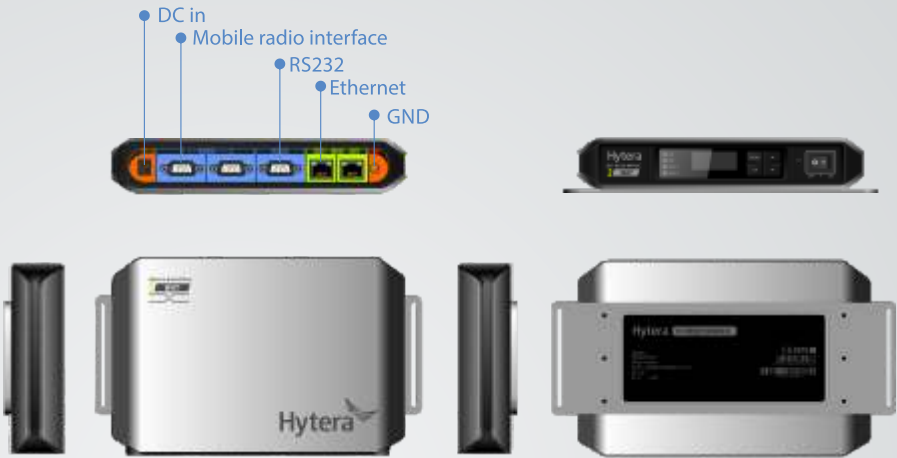
Unified Inter-department Dispatching

By connecting different networks together into Hytera SmartOne, the dispatcher based on this platform can easily achieve unified dispatching for all network users.

**Typical Case:** To handle a major emergency, multiple departments operating in various systems like DMR Trunking, TETRA or the PSTN Network, may be dispatched. With Hytera SmartOne, communications and dispatching among these departments can be achieved.



Product Specification  
DS-6610 MPUC

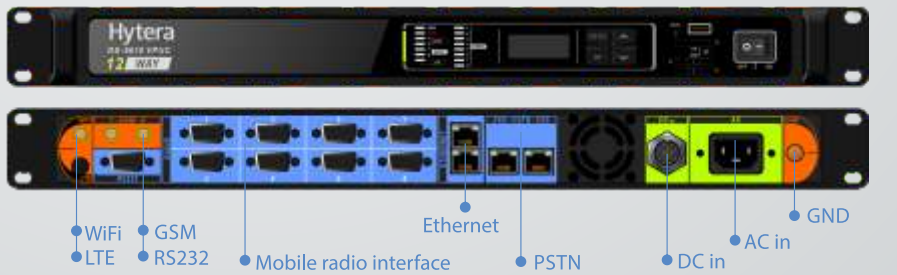


Specification

**2 way access:** 2 mobile radio interface  
**Ethernet interface:** 2 X RJ45, 100/1000M Base-T  
**Power supply:** 11V~15V DC, 1.5A  
**Operating temperature:** 0°C to 40°C  
**Storage temperature:** -10°C to 60°C  
**Humidity:** 10% ~ 90%

**Weight:** 0.9Kg  
**Dimension(mm):** 225(W)x138(D)x40(H)  
**Certificate:** FCC, CE  
**Power Consumption:** 9W

DS-6610 VPUC



Specification

**12 way access:** 8 mobile radio interface; 2 PSTN(1 FXO and 1 FXS); 2 GSM  
**Supports Wifi AP/ Supports LTE data transmission**  
**Ethernet interface:** 2 X RJ45, 100/1000M Base-T  
**Power supply:** DC input: 11V~15V DC, 1.5A; AC input: 100 ~ 240VAC, 50 ~ 60Hz  
**Operating temperature:** -20°C to 60°C  
**Storage temperature:** -20°C to 60°C  
**Humidity:** 10% ~ 90%

**Weight:** 5.4Kg  
**Dimension(mm):** 440(W)x337(D)x43.6(H)  
**Certificate:** FCC, CE  
**Power Consumption:** 19W

SmartOne connect function			
Features	Wired gateway		Wireless gateway
	DMR, MPT, Tetra, XPT	Hytera DMR Tier 2 & Hytera DMR Tier 3	
Group call	✓	✓	✓
Group message	✓	✓	✓
Individual call		✓	
Individual mesasge		✓	
E2EE		✓	